

## Shaft collar one-piece, with clamping lever

### Item description/product images



### Description

#### Material:

Steel 1.0718.

Stainless steel 1.4305.

#### Version:

Steel black oxidised.

Stainless steel bright.

Insert stainless-steel.

#### Note:

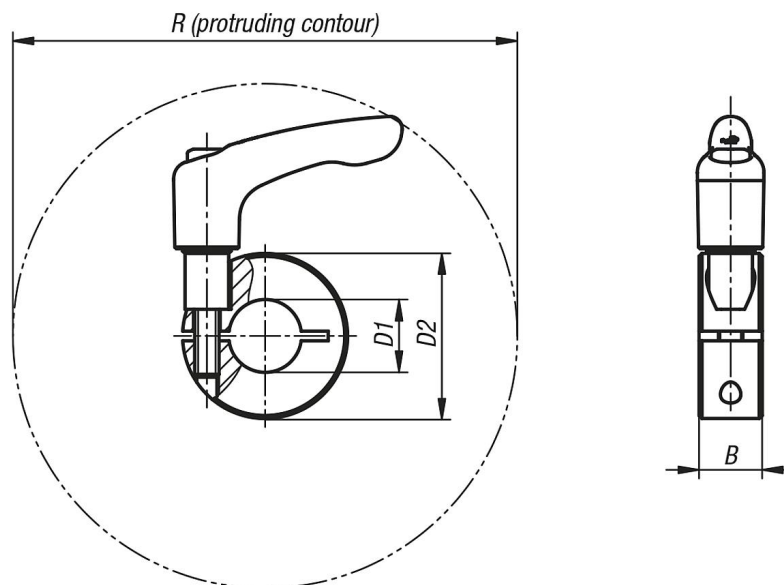
One-piece shaft collars surround the shaft with an equal distribution of the clamping force. This leads to a very precise fit and high retaining force without damaging the shaft.

The shaft tolerance should lie within h11.

#### On request:

Other dimensions.

### Drawings



### Overview of items

#### Shaft collar, one-piece with clamping lever

| Order No.   | Main material      | B  | D1 | D2 | R     |
|-------------|--------------------|----|----|----|-------|
| K0611.11001 | Free-cutting steel | 9  | 10 | 24 | 44,1  |
| K0611.11201 | Free-cutting steel | 11 | 12 | 28 | 90,4  |
| K0611.11501 | Free-cutting steel | 13 | 15 | 34 | 105   |
| K0611.11601 | Free-cutting steel | 13 | 16 | 34 | 105   |
| K0611.11801 | Free-cutting steel | 13 | 18 | 36 | 105,7 |
| K0611.12001 | Free-cutting steel | 15 | 20 | 40 | 103,8 |
| K0611.12201 | Free-cutting steel | 15 | 22 | 42 | 104,2 |

## Shaft collar one-piece, with clamping lever

### Overview of items

| Order No.   | Main material      | B  | D1 | D2 | R     |
|-------------|--------------------|----|----|----|-------|
| K0611.12501 | Free-cutting steel | 15 | 25 | 45 | 104,8 |
| K0611.12801 | Free-cutting steel | 15 | 28 | 48 | 106,8 |
| K0611.13001 | Free-cutting steel | 15 | 30 | 54 | 112,6 |
| K0611.14001 | Free-cutting steel | 15 | 40 | 60 | 113,2 |
| K0611.15001 | Free-cutting steel | 19 | 50 | 78 | 150,2 |
| K0611.11002 | Stainless steel    | 9  | 10 | 24 | 44,1  |
| K0611.11202 | Stainless steel    | 11 | 12 | 28 | 90,4  |
| K0611.11502 | Stainless steel    | 13 | 15 | 34 | 105   |
| K0611.11602 | Stainless steel    | 13 | 16 | 34 | 105   |
| K0611.11802 | Stainless steel    | 13 | 18 | 36 | 105,7 |
| K0611.12002 | Stainless steel    | 15 | 20 | 40 | 103,8 |
| K0611.12202 | Stainless steel    | 15 | 22 | 42 | 104,2 |
| K0611.12502 | Stainless steel    | 15 | 25 | 45 | 104,8 |
| K0611.12802 | Stainless steel    | 15 | 28 | 48 | 106,8 |
| K0611.13002 | Stainless steel    | 15 | 30 | 54 | 112,6 |
| K0611.14002 | Stainless steel    | 15 | 40 | 60 | 113,2 |
| K0611.15002 | Stainless steel    | 19 | 50 | 78 | 150,2 |