

Magnets shallow pot

Item description/product images



Description

Material:

Housing, steel.
Magnetic core AlNiCo.

Version:

Housing painted red.

Note:

Shielded system. Shallow pot magnets are used in fixtures with minimal space.

Temperature range:

max. 450°C.

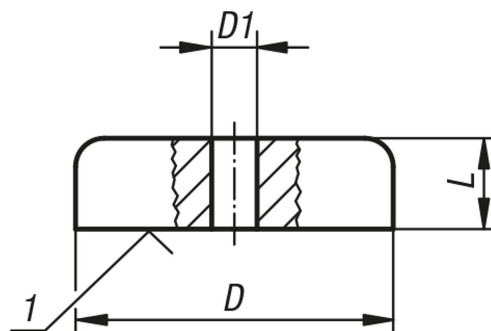
On request:

Other colours.

Drawing reference:

1) magnetic face

Drawings



Overview of items

Magnets shallow pot

Order No.	D	D1	L	Magnetic force N
K0558.01	19	3,5	8	30
K0558.02	29	5	9	55
K0558.03	38	5	10,5	95