

Lateral spring plungers with threaded sleeve

Item description/product images



Description

Material:

Steel.

Version:

Thrust pin steel, hardened and galvanized.

Sleeve blue galvanized.

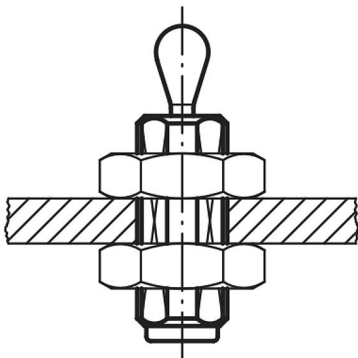
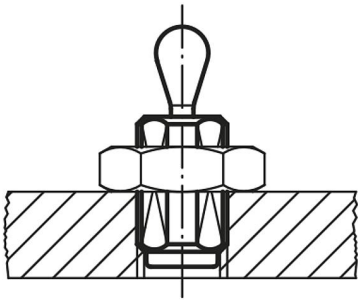
Note:

Lateral spring plungers with threaded sleeve can be individually adjusted to suit the part being held. The threaded sleeve is also suitable for screwing into thin sheet metal as it can be fastened with one or two nuts.

W and Z are customer specified.

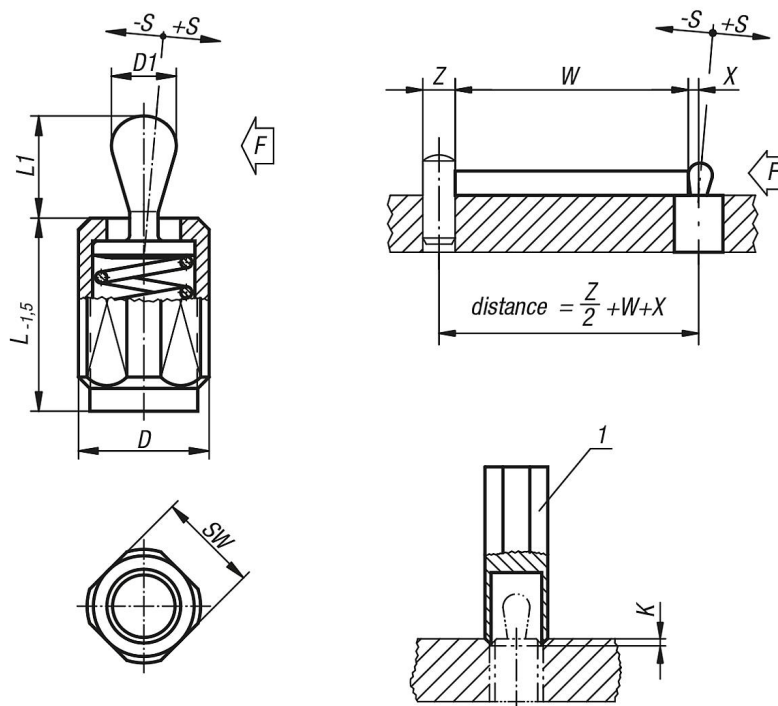
Drawing reference:

1) assembly tool



Lateral spring plungers with threaded sleeve

Drawings



Overview of items

Lateral spring plungers without seal

Order No.	L	L1	D	D1	±S	F ca.N	X	SW	K	Order No. assembly tool
K0371.2020X27	26,5	6,7	M12	5	0,8	20	1,6	10	2x60°	K0371.06
K0371.2050X12	11,5	6,7	M12	5	0,8	50	1,6	10	2x60°	K0371.06
K0371.2050X20	19	6,7	M12	5	0,8	50	1,6	10	2x60°	K0371.06
K0371.2050X27	26,5	6,7	M12	5	0,8	50	1,6	10	2x60°	K0371.06
K0371.2075X27	26,5	10,7	M12	6	1	75	1,8	10	2x60°	K0371.06
K0371.1020X12	11,5	6,7	M12	5	0,8	20	1,6	10	2x60°	K0371.06
K0371.1020X20	19	6,7	M12	5	0,8	20	1,6	10	2x60°	K0371.06
K0371.1020X27	26,5	6,7	M12	5	0,8	20	1,6	10	2x60°	K0371.06
K0371.1050X12	11,5	6,7	M12	5	0,8	50	1,6	10	2x60°	K0371.06
K0371.1050X20	19	6,7	M12	5	0,8	50	1,6	10	2x60°	K0371.06
K0371.1050X27	26,5	6,7	M12	5	0,8	50	1,6	10	2x60°	K0371.06
K0371.1100X12	11,5	6,7	M12	5	0,8	100	1,6	10	2x60°	K0371.06
K0371.1100X20	19	6,7	M12	5	0,8	100	1,6	10	2x60°	K0371.06
K0371.1100X27	26,5	6,7	M12	5	0,8	100	1,6	10	2x60°	K0371.06
K0371.1040X12	11,5	10,7	M12	6	1	40	1,8	10	2x60°	K0371.06
K0371.1040X20	19	10,7	M12	6	1	40	1,8	10	2x60°	K0371.06
K0371.1040X27	26,5	10,7	M12	6	1	40	1,8	10	2x60°	K0371.06
K0371.1075X12	11,5	10,7	M12	6	1	75	1,8	10	2x60°	K0371.06
K0371.1075X20	19	10,7	M12	6	1	75	1,8	10	2x60°	K0371.06
K0371.1075X27	26,5	10,7	M12	6	1	75	1,8	10	2x60°	K0371.06
K0371.1150X12	11,5	10,7	M12	6	1	100	1,8	10	2x60°	K0371.06
K0371.1150X20	19	10,7	M12	6	1	100	1,8	10	2x60°	K0371.06
K0371.1150X27	26,5	10,7	M12	6	1	100	1,8	10	2x60°	K0371.06
K0371.1100X16	18	16,7	M18x1,5	10	1,6	100	3,2	16	2,5x60°	K0371.10
K0371.1100X29	31,5	16,7	M18x1,5	10	1,6	100	3,2	16	2,5x60°	K0371.10
K0371.1100X43	45	16,7	M18x1,5	10	1,6	100	3,2	16	2,5x60°	K0371.10
K0371.1200X16	18	16,7	M18x1,5	10	1,6	150	3,2	16	2,5x60°	K0371.10
K0371.1200X29	31,5	16,7	M18x1,5	10	1,6	150	3,2	16	2,5x60°	K0371.10

Lateral spring plungers with threaded sleeve

Overview of items

Order No.	L	L1	D	D1	±S	F ca.N	X	SW	K	Order No. assembly tool
K0371.1200X43	45	16,7	M18x1,5	10	1,6	150	3,2	16	2,5x60°	K0371.10
K0371.1300X16	18	16,7	M18x1,5	10	1,6	200	3,2	16	2,5x60°	K0371.10
K0371.1300X29	31,5	16,7	M18x1,5	10	1,6	200	3,2	16	2,5x60°	K0371.10
K0371.1300X43	45	16,7	M18x1,5	10	1,6	200	3,2	16	2,5x60°	K0371.10

Lateral spring plungers with seal

Order No.	L	L1	D	D1	±S	F ca.N	X	SW	K	Order No. assembly tool
K0371.4020X20	19	6	M12	5	0,8	20	1,6	10	2x60°	K0371.06
K0371.4020X27	26,5	6	M12	5	0,8	20	1,6	10	2x60°	K0371.06
K0371.4050X12	11,5	6	M12	5	0,8	50	1,6	10	2x60°	K0371.06
K0371.4050X27	26,5	6	M12	5	0,8	50	1,6	10	2x60°	K0371.06
K0371.4040X12	11,5	10	M12	6	1	40	1,8	10	2x60°	K0371.06
K0371.4040X27	26,5	10	M12	6	1	40	1,8	10	2x60°	K0371.06
K0371.4075X20	19	10	M12	6	1	75	1,8	10	2x60°	K0371.06
K0371.4075X27	26,5	10	M12	6	1	75	1,8	10	2x60°	K0371.06
K0371.3020X12	11,5	6	M12	5	0,8	20	1,6	10	2x60°	K0371.06
K0371.3020X20	19	6	M12	5	0,8	20	1,6	10	2x60°	K0371.06
K0371.3020X27	26,5	6	M12	5	0,8	20	1,6	10	2x60°	K0371.06
K0371.3050X12	11,5	6	M12	5	0,8	50	1,6	10	2x60°	K0371.06
K0371.3050X20	19	6	M12	5	0,8	50	1,6	10	2x60°	K0371.06
K0371.3050X27	26,5	6	M12	5	0,8	50	1,6	10	2x60°	K0371.06
K0371.3100X12	11,5	6	M12	5	0,8	100	1,6	10	2x60°	K0371.06
K0371.3100X20	19	6	M12	5	0,8	100	1,6	10	2x60°	K0371.06
K0371.3100X27	26,5	6	M12	5	0,8	100	1,6	10	2x60°	K0371.06
K0371.3040X12	11,5	10	M12	6	1	40	1,8	10	2x60°	K0371.06
K0371.3040X20	19	10	M12	6	1	40	1,8	10	2x60°	K0371.06
K0371.3040X27	26,5	10	M12	6	1	40	1,8	10	2x60°	K0371.06
K0371.3075X12	11,5	10	M12	6	1	75	1,8	10	2x60°	K0371.06
K0371.3075X20	19	10	M12	6	1	75	1,8	10	2x60°	K0371.06
K0371.3075X27	26,5	10	M12	6	1	75	1,8	10	2x60°	K0371.06
K0371.3150X12	11,5	10	M12	6	1	100	1,8	10	2x60°	K0371.06
K0371.3150X20	19	10	M12	6	1	100	1,8	10	2x60°	K0371.06
K0371.3150X27	26,5	10	M12	6	1	100	1,8	10	2x60°	K0371.06
K0371.3100X16	18	16	M18x1,5	10	1,6	100	3,2	16	2,5x60°	K0371.10
K0371.3100X29	31,5	16	M18x1,5	10	1,6	100	3,2	16	2,5x60°	K0371.10
K0371.3100X43	45	16	M18x1,5	10	1,6	100	3,2	16	2,5x60°	K0371.10
K0371.3200X16	18	16	M18x1,5	10	1,6	150	3,2	16	2,5x60°	K0371.10
K0371.3200X29	31,5	16	M18x1,5	10	1,6	150	3,2	16	2,5x60°	K0371.10
K0371.3200X43	45	16	M18x1,5	10	1,6	150	3,2	16	2,5x60°	K0371.10
K0371.3300X16	18	16	M18x1,5	10	1,6	200	3,2	16	2,5x60°	K0371.10
K0371.3300X29	31,5	16	M18x1,5	10	1,6	200	3,2	16	2,5x60°	K0371.10
K0371.3300X43	45	16	M18x1,5	10	1,6	200	3,2	16	2,5x60°	K0371.10